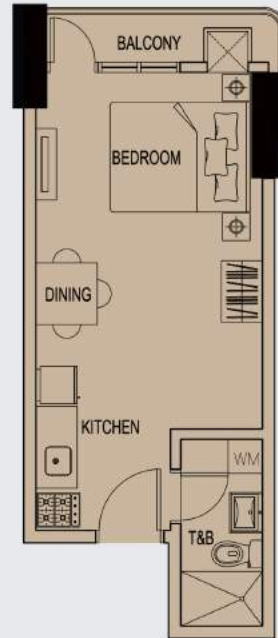
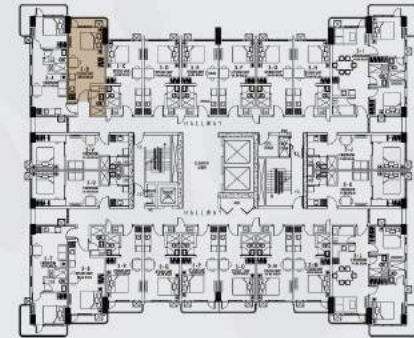


1 BR W/ BALCONY UNIT



3 - B FLOOR PLAN
29.04 SQ. M



3RD FLOOR PLAN

STUDIO w/ BALCONY	APPROX UNIT AREA
Living, Dining Kitchen, Bedroom	21.57 sqm
Balcony	3.24 sqm
T&B	4.23 sqm
Total	29.04 sqm

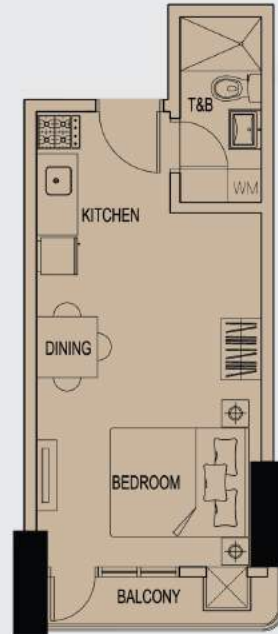


A Project of

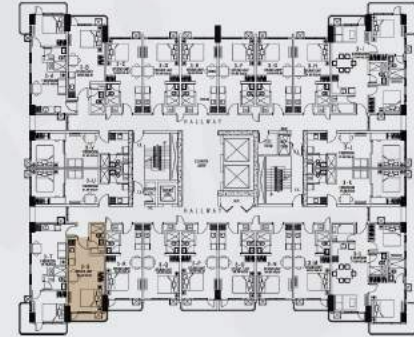


Worldwide Central Properties Inc.
Member of Worldwide Group of Companies

1 BR W/ BALCONY UNIT



3 - S FLOOR PLAN
29.04 SQ. M



3RD FLOOR PLAN

STUDIO w/ BALCONY	APPROX UNIT AREA
Living, Dining Kitchen, Bedroom	21.57 sqm
Balcony	3.24 sqm
T&B	4.23 sqm
Total	29.04 sqm

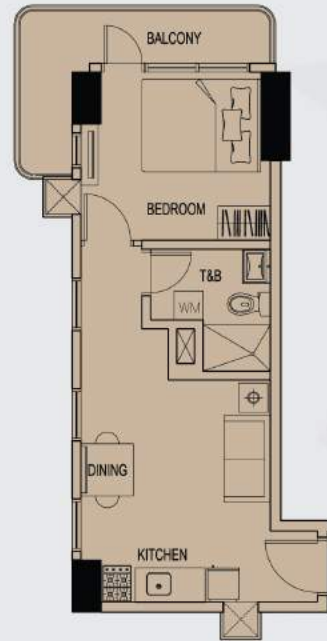


A Project of

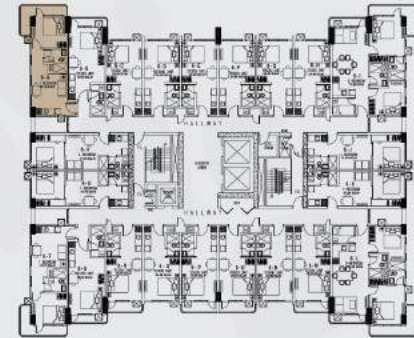


Worldwide Central Properties Inc.
Member of Worldwide Group of Companies

1 BR W/ BALCONY UNIT



6 - A FLOOR PLAN
40.70 SQ. M



6TH FLOOR PLAN

1 BEDROOM w/ BALCONY	APPROX UNIT AREA
Living, Dining Kitchen	18.73 sqm
Bedroom	10.89 sqm
Balcony	6.47 sqm
T&B	4.61 sqm
Total	40.70 sqm

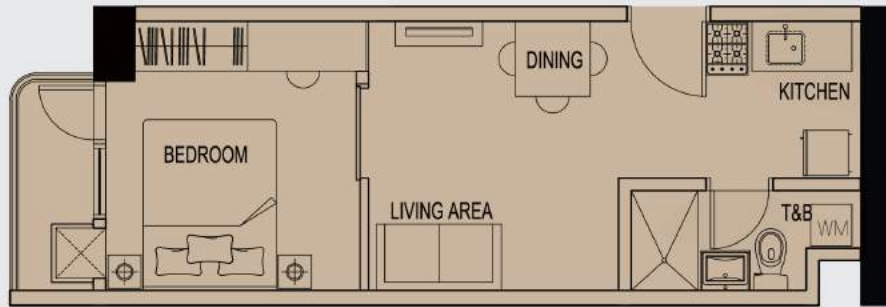


A Project of

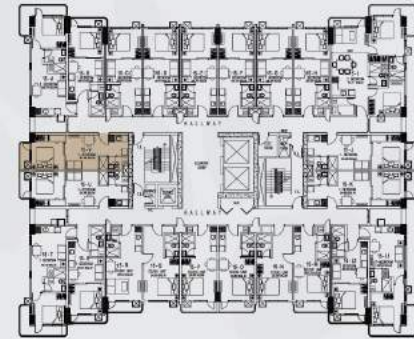


Worldwide Central Properties Inc.
Member of Worldwide Group of Companies

1 BR W/ BALCONY UNIT



15 - V FLOOR PLAN
34.69 SQ. M



15TH FLOOR PLAN

1 BEDROOM	APPROX UNIT AREA
Living, Dining Kitchen	17.01 sqm
Bedroom	11.37 sqm
T&B	3.63 sqm
Balcony	2.68 sqm
Total	34.69 sqm

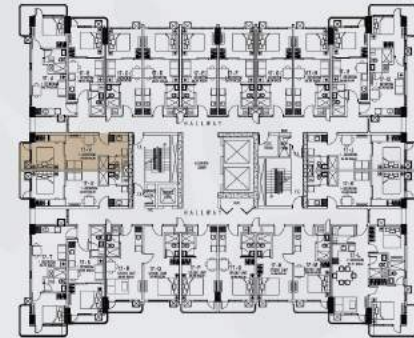


A Project of



Worldwide Central Properties Inc.
Member of Worldwide Group of Companies

1 BR UNIT



17TH FLOOR PLAN

1 BEDROOM	APPROX UNIT AREA
Living, Dining Kitchen	15.25 sqm
Bedroom	10.32 sqm
T&B	3.17 sqm
Total	28.74 sqm

17-G FLOOR PLAN
28.74 SQ.M



A Project of

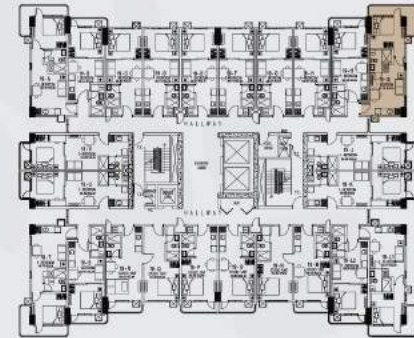


Worldwide Central Properties Inc.
Member of Worldwide Group of Companies

1 BR W/ BALCONY UNIT



19-12 FLOOR PLAN
40.70 SQ.M



19TH FLOOR PLAN

1 BEDROOM w/ BALCONY	APPROX UNIT AREA
Living, Dining Kitchen	17.66 sqm
Bedroom	11.95 sqm
Balcony	6.59 sqm
T&B	4.50 sqm
Total	40.70 sqm



A Project of

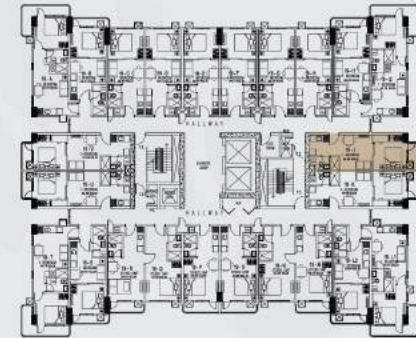


Worldwide Central Properties Inc.
Member of Worldwide Group of Companies

1 BR W/BALCONY UNIT



19-J FLOOR PLAN
34.69 SQ.M



19TH FLOOR PLAN

1 BEDROOM	APPROX UNIT AREA
Living, Dining Kitchen	17.01 sqm
Bedroom	11.37 sqm
T&B	3.63 sqm
Balcony	2.68 sqm
Total	34.69 sqm



A Project of



Worldwide Central Properties Inc.
Member of Worldwide Group of Companies